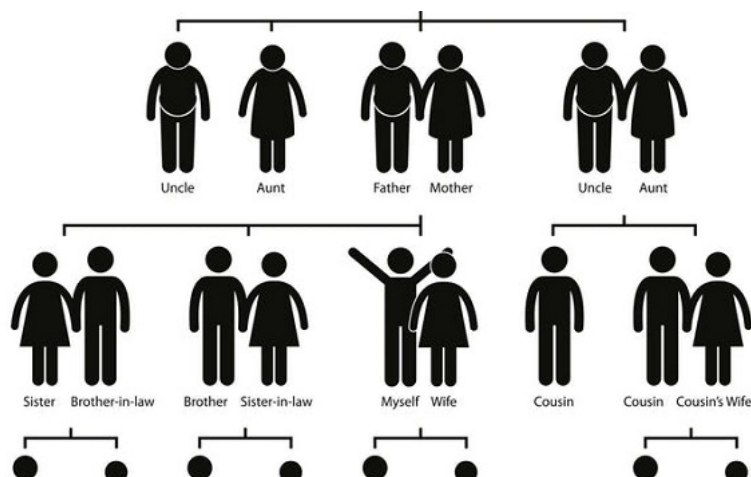


[News
Archive](#)
[In the press](#)
[Follow Us](#)


The genetic testing maze: who is there to support you? Free public talk and exhibition

26-09-2019



Have you or someone you know had a diagnosis for a genetic condition and received support from a genetic counsellor? Find out more about genetic counsellors and the critical role they play in helping people make decisions at a free event on **2nd October** at the Wellcome Genome Campus, and ask the experts.

Step into the shoes of someone receiving a diagnosis and explore their journey with a new exhibition on genetic counselling.

As the use of genetics is becoming mainstream in medicine, more and more people are having genetic tests to help diagnose, predict and personalise treatment for cancer and rare diseases. As people receive diagnoses they are eligible for support for themselves and their families by genetic counsellors, but many people are not aware of this vital service.

Book a place at the free public event: *'The genetic testing maze: who is there to support you?'* to find out how genetic counsellors work with patients to enable them to make informed decisions about genetic tests and diagnoses. It will be a lively evening in conversation with genetic counsellors from the UK's Association of Genetic Nurses and Counsellors.

Visitors to this talk will also get the opportunity to attend the opening of a brand new exhibition, *'Empowering People: Genetic Counselling in Focus'*. This exhibition will take visitors through the steps involved in discussing genetics tests, diagnoses and their implications, and will feature heart-wrenching video interviews with genetic counsellors who share their emotional journeys in this work.

The exhibition can also be visited during monthly Open Saturdays at the Wellcome Genome Campus. It is free to attend but booking is required. Open Saturday dates include **October 19th, November 16th and December 21st 2019**. Visitors can also come back to see the exhibition later in the year with their family and friends.

Professor Anna Middleton, Genetic Counsellor and Head of Wellcome Genome Campus Society and Ethics Research, who is chairing the public talk, said: "Genetic counselling helps patients understand their genetic information and risk of disease and gives them the power to make decisions about their lives and families. Unless they've experienced it, many people don't know genetic counselling exists. We are delighted to invite people to our genetic counselling event to help shed some light on this vital, but little-known support."

Rebecca Gilmore, Exhibitions and Interpretation Co-ordinator from the Wellcome Genome Campus Public Engagement team, said: "Genetic counsellors support people to make sense of genetic medical information, in a way that is meaningful for themselves and their families. Although each family is unique, the self-guided exhibition takes people through the common steps and discussions, as if they were working through the process themselves. This will allow people to explore and learn, and empathise as they go round."

Both the public talk and the new exhibition are taking place at the World Congress on Genetic Counselling (2-4 October), an international conference developed and funded by Advanced Courses and Scientific Conferences, which will bring hundreds of genetic counsellors from across the globe to the Wellcome

[Register
our mailing](#)
[News](#)
[Featured
Events](#)

The Mental Health and Wellbeing Showcase
10 October 2

CIIPM Trainee IP Matters (half day) with Prosecution Legal Patent Searching (half day)
16 October 2

5th HVM & N Materials 20 Conference & Exhibition
6 November

[Featured
Jobs](#)

Product Manager
Redgate Software Ltd

Genome Campus.

Public talk

The genetic testing maze: who is there to support you? Wednesday 2 October, 7pm
Wellcome Genome Campus Conference Centre, Hinxton, CB10 1RQ

Free event, but booking essential! Book at <https://www.eventbrite.co.uk/e/the-genetic-testing-maze-who-is-there-to-support-you-tickets-70160581187>

Exhibition

The *Empowering People: Genetic Counselling in Focus* exhibition is also available to visit as part of the Wellcome Genome Campus' Open Saturdays programme, on every third Saturday of the month, where everyone is welcome to visit the Campus. Dates to visit include: **October 19th, November 16th and December 21st 2019.**

Open Saturdays are free for all but booking is required. Empowering People: Genetic Counselling in Focus is also open by arrangements for group visits. For further details, and to book your free tickets, visit: www.wgc.org.uk/engage

To read more information, click [here](#).

[Back to Search](#)

[Contact Us](#) [Terms & Conditions](#) [Disclaimer](#) [Privacy](#)

Cambridge Network Limited is a company registered in England under company No. 3400152
The Hauser Forum, 3 Charles Babbage Road, Cambridge, CB3 0GT

© Copyright All Rights Reserved Cambridge Network

